

KÜRDÎ'Lİ HİCAZKÂR ŞARKI

Koparan sînemi ağıâr elidir

Ağır Aksak

Bimen Şen



Ko pa ran si



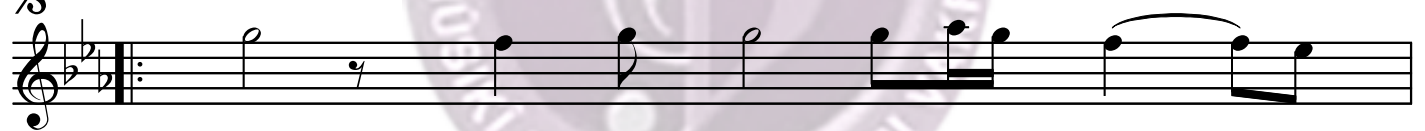
ne mi ağ yar



e li dir



e li dir (SAZ



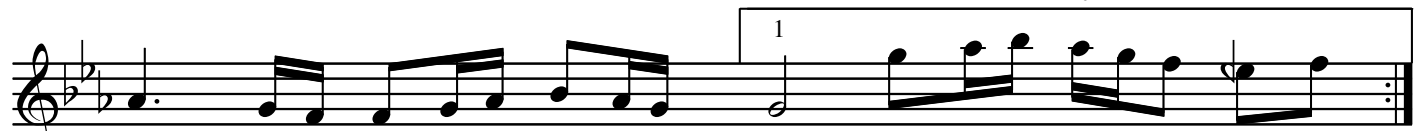
—) Dost e lin den



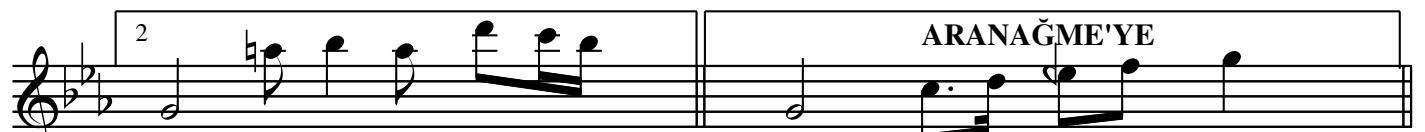
yü re ğim ya



re li dir ya



re li dir (SAZ

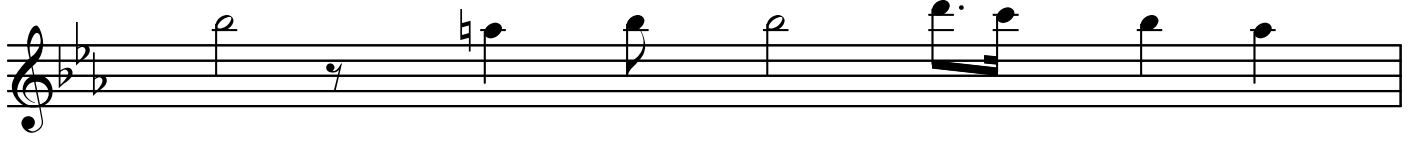


dir (SAZ

ARANAĞME'YE

dir (SAZ

Kürdî'li Hicazkâr Şarkı (2.Sayfa)



Ya re me ya



re a çan yar



e li dir



e li dir (SAZ



ARANAĞME

