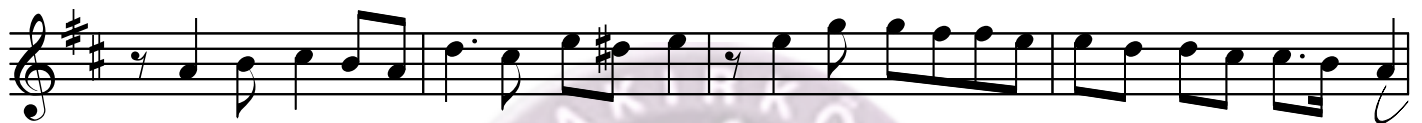


# NIŞÂBUREK PEŞREV

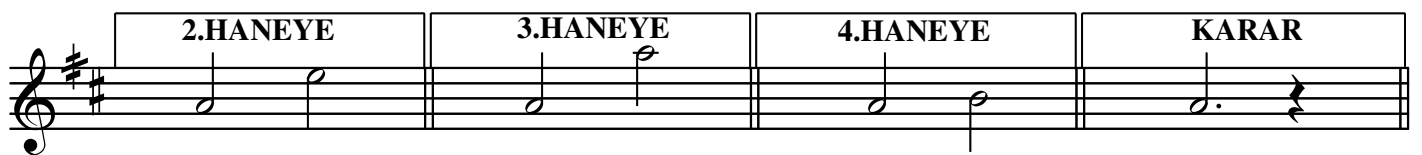
Hafif

Tanbûrî Osman Bey

I.HÂNE



TESLİM



## Nişâburek Peşrev ( 2.Sayfa )

## II.HÂNE

Musical notation for the second Hâne of Nişâburek Peşrev, consisting of four staves of music in G major (one sharp) and 2/4 time. The notation includes various rhythmic values such as eighth and sixteenth notes, and rests. A double bar line with a repeat sign is at the end of the fourth staff.

## III.HÂNE

Musical notation for the third Hâne of Nişâburek Peşrev, consisting of four staves of music in G major (one sharp) and 2/4 time. The notation includes various rhythmic values such as eighth and sixteenth notes, and rests. A double bar line with a repeat sign is at the end of the fourth staff.

## IV.HÂNE

Musical notation for the fourth Hâne of Nişâburek Peşrev, consisting of one staff of music in G major (one sharp) and 2/4 time. The notation includes various rhythmic values such as eighth and sixteenth notes, and rests.

Nişâburek Peşrev ( 3.Sayfa )

The image displays a musical score for the piece "Nişâburek Peşrev ( 3.Sayfa )". The score is written on four staves, each beginning with a treble clef and a key signature of one sharp (F#). The music is composed of eighth and sixteenth notes, with some rests and accidentals. A large, faint watermark of the Bakirköy Müsiki Konservatuari Vakfi logo is visible in the background, featuring a stylized treble clef and the text "BAKIRKÖY MÜSİKİ KONSERVATUARI VAKFI". The score concludes with a double bar line and a fermata symbol.