

# KARCIĞAR ŞARKI

## Elimdeyken senin gül penbe destin

Curcuna

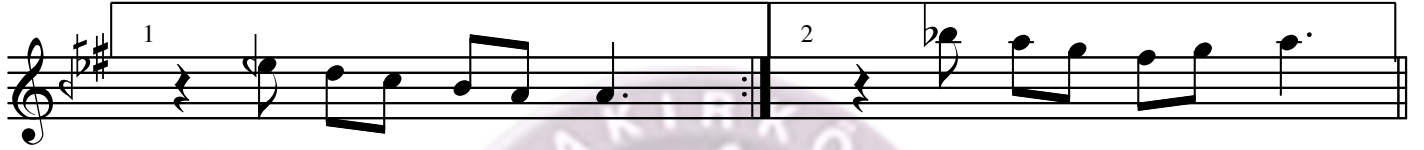
Hristaki



E lim dey ken se nin gül



pen pen be des tin



(SAZ \_\_\_\_\_) (SAZ \_\_\_\_\_)



E lâ göz lüm sü zül sün



çeş çeş mi mes tin (SON)



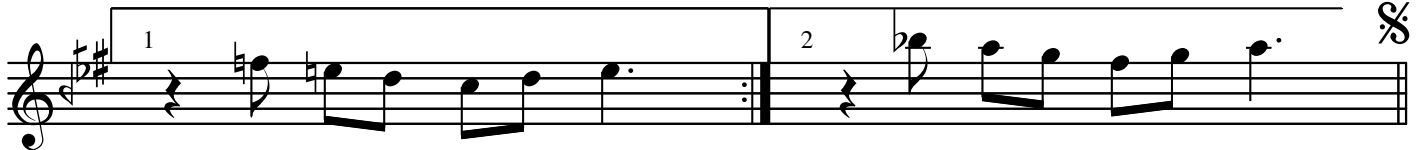
(SAZ \_\_\_\_\_) (SAZ \_\_\_\_\_)



Ba yıl sın neş ve sin den



dil dil şi kes tin



(SAZ \_\_\_\_\_) (SAZ \_\_\_\_\_)